

HTA13 P / HTA16 P / HTA19 P



EASE OF INSTALLATION

- > Can be towed by a standard half-ton pickup truck - No commercial driver's license needed
- > Hydraulic outriggers and automatic leveling allow operation in under 30 seconds

EXCEPTIONAL PRODUCTIVITY

- > Safe elevation on slopes up to 12.5 degrees
- > 100% Battery powered with optional generator for extended duty cycles
- > Superior combination of industry leading capacity and outreach
- > Air / water lines and 110V GFI protected power to the platform

LOW MAINTENANCE

- > Electronic controls simplify operation and minimize hydraulic hoses

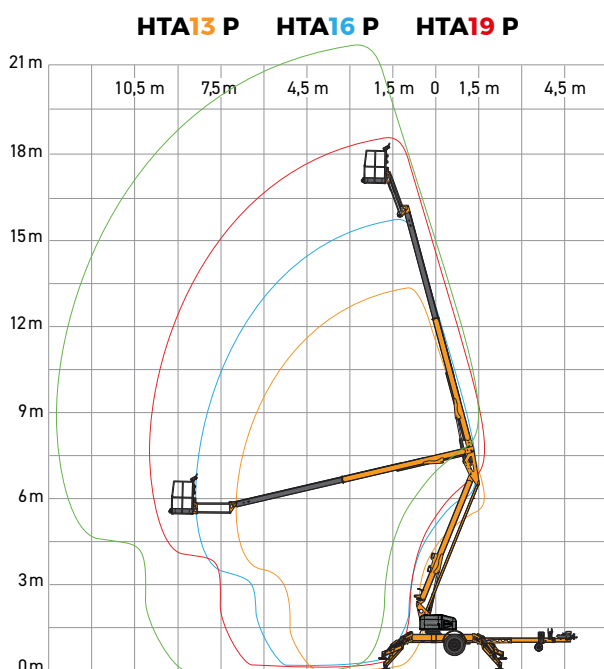


HTA13 P / HTA16 P / HTA19 P

TRAILER-MOUNTED BOOMS

TECHNICAL DATA

	HTA13 P	HTA16 P	HTA19 P
Working height	12.73 m	15.54 m	18.67 m
Platform height	10.9 m	13.72 m	16.84 m
Horizontal outreach (from centerline)	6.86 m	8.23 m	10.19 m
Horizontal outreach (from edge of footpad)	5.31 m	6.40 m	8.33 m
Up and over height	5.79 m	6.33 m	7.04 m
Lift capacity	227 kg		
A Length - stowed	4.96 m	5.94 m	6.99 m
B Width stowed	1.67 m		1.7 m
C Height stowed	1.96 m		
D x E Platform size	1.24 x 0.84 m		
F Widest Point	3.6 m	4.19 m	4.47 m
G Widest Point	3.4 m	4.11 m	4.57 m
Turntable rotation	350° non-continuous		
Jib - length	1.3 m		
Jib - Vertical motion	150° (+ 70 / - 80)		
Tow speed rating	105 km/h		
Leveling capability	12.5 °		
Tyre size	ST 225/75 D15	ST 225/75 R15	
Power source	4 x 6 V 245 amp-hr		
Tongue weight (no options)	111 kg	132 kg	152 kg
Weight (no options)	1 542 kg	1 905 kg	2 177 kg



STANDARD EQUIPMENT

- > Hydraulic outriggers
- > Automatic leveling system and self-leveling platform
- > 110V GFI protected outlet to platform
- > Tilt alarm / sensor
- > Hour meter and battery condition indicator
- > Easy to use controls
- > Air and water line to platform
- > Inboard 25 amp charger
- > Integrated forklift pockets
- > Hydraulic surge brakes (trailer)

OPTIONS & ACCESSORIES

- > Spare tire and mounting kit
- > DC / Gas hybrid
- > Manual platform rotator - 120° stop point to stop point
- > Flashing beacon
- > Fluorescent tube caddy
- > Tool tray
- > Electric brakes (trailer)

