



Bridge plates

Made of steel and aluminium

HÖRMANN





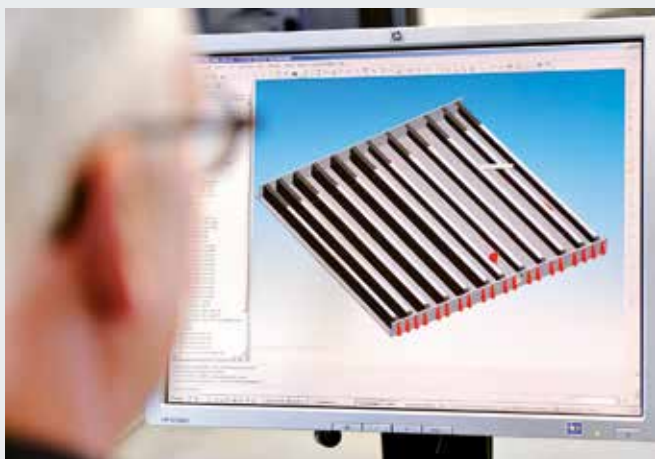
Brand quality from Hörmann	4
Sustainable production	6
<hr/>	
Plates	
Type KBS	8
Type SKB	10
Type FBS	12
Type FBA	14
Type FBT	16
<hr/>	
Segmented lip	18
<hr/>	
Fixing plates	20
<hr/>	
Technical details	21
<hr/>	
Hörmann product range	22

Brand quality from Hörmann

Reliable and oriented towards the future



Norma Logistics Center (Ertfurt, Germany)



In-house product development

At Hörmann, innovation is produced in-house – highly qualified employees of the development department are in charge of product optimisation and new developments. This results in market-ready, high-quality products that are very popular around the globe.



Modern manufacturing

Hörmann's high automation level ensures a consistently high quality level. All production processes are precisely calibrated and monitored by modern computer systems. This way, large quantities of dock levellers, shelters and seals are manufactured, all with equal precision. However, we also manufacture smaller quantities or customised special solutions according to customer specifications at the same high quality level.



As Europe's leading manufacturer of doors, frames, operators and loading technology, we are committed to high product and service quality. This is how we set standards on an international scale.

Highly-specialised factories develop and produce construction components that are marked by excellent quality, functional safety and a long service life.

Our presence in the global economy's key regions makes us a strong, future-oriented partner for industrial construction projects.



Competent advice

Experienced specialists within our customer-oriented sales organisation accompany you from the planning stage, throughout the technical clarification, up until the final building inspection. Our complete up-to-date documentation, including technical manuals, are always available online on our website at www.hoermann.com.



Efficient service

Our extensive service network means that we are always nearby and at your service around the clock. This is a major advantage in terms of inspections, maintenance and repairs.



Sustainably produced loading technology from Hörmann

Environmentally friendly production

A comprehensive energy management system ensures environmentally-friendly production.

Regional raw materials

The majority of applied raw materials is purchased from Germany and central Europe.

Long-lasting products

A long service life and low maintenance costs thanks to the use of high-quality materials.

Sustainable construction with Hörmann's expertise

Hörmann has been able to gain great expertise in sustainable construction through various projects. We also apply this know-how to support your projects. You will receive the information required for product certification in the form of a corresponding EPD along with our offer for loading technology and industrial doors.



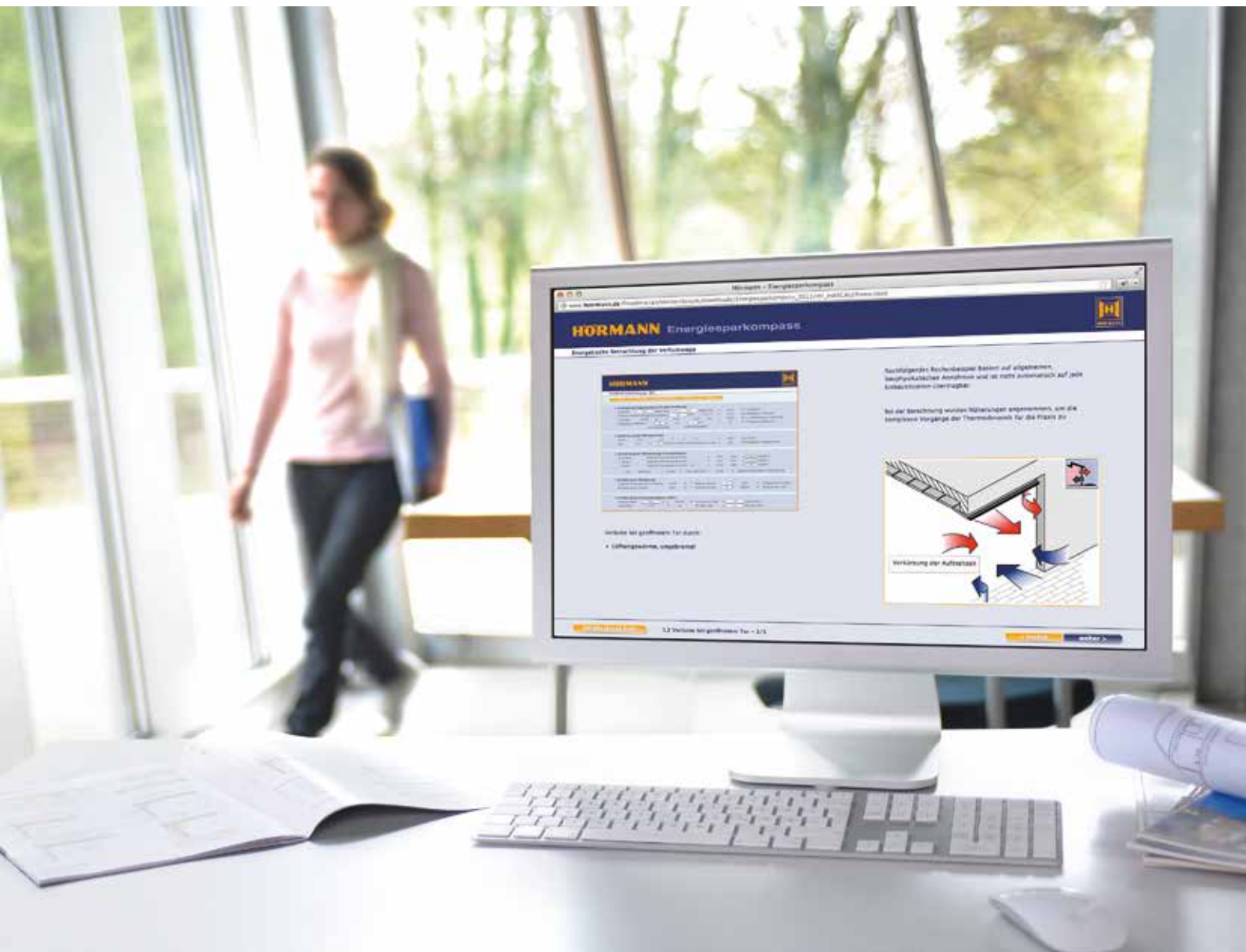
DGNB

Deutsche Gesellschaft für Nachhaltiges Bauen e.V.
German Sustainable Building Council



Sustainable planning

With the energy savings compass



As a part of the building envelope, loading technology solutions play a significant part in the energy efficiency of commercial buildings. Hörmann's energy savings compass shows how loading bays and industrial doors are planned with energy-efficiency and sustainability in mind. An integrated calculation module estimates the amortisation period for door modernisation.



Plan with the energy savings compass at:
www.hoermann.com/energysavingscompass

Type KBS

Drawbridge leveller

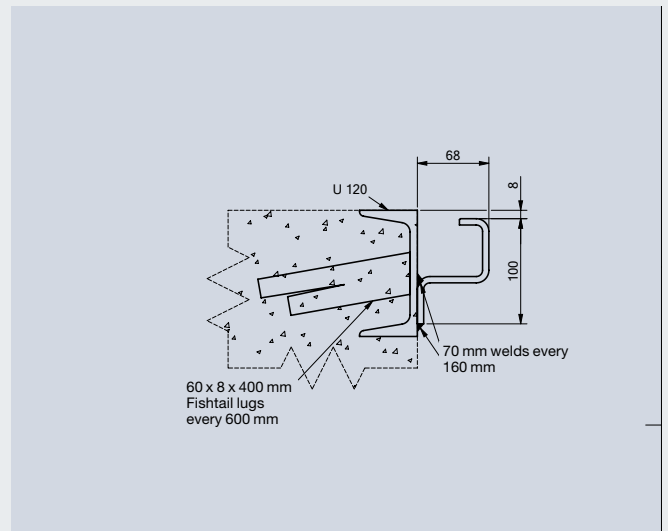
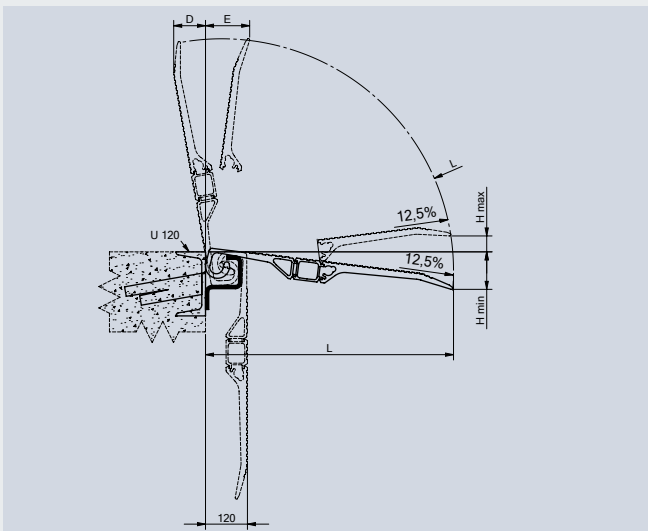


The KBS drawbridge leveller is perfect for minor differences in levels. Robust and maintenance free, it is suitable for a wide variety of uses and users. The KBS can slide from side to side and should be stored in a vertical position.



Safety latch

The automatic safety latch prevents the plate from falling when not in use and is easily released by foot.



KBS-bridge

KBS-guide rail, galvanized

Dimensions

Type	Length L (mm)	Width B (mm)	Dimension D (mm)	Height Difference (mm)		Capacity (kgs/ea)	Weight (kgs/ea)
				min.	max.		
KBS 00	410	1250	80	- 70	+ 30	4000	19
KBS 12	535	1250	100	- 90	+ 45	4000	24
KBS 13	785	1250	150	- 120	+ 75	4000	31
KBS 02	910	1250	170	- 135	+ 90	4000	36
KBS 04	410	1500	80	- 70	+ 30	4000	23
KBS 14	535	1500	100	- 90	+ 45	4000	28
KBS 15	785	1500	150	- 120	+ 75	4000	38
KBS 06	910	1500	170	- 135	+ 90	4000	44

Guide rail	2000						8 kg/m
	2500						8 kg/m
	3000						8 kg/m

Other dimensions on request

Type SKB

Medium sized loading bridge



The SKB drawbridge dock leveller is designed for medium duty applications in order to provide easy and flexible loading of lorries with up to 190 mm height difference from the docking level. It is available as a static version, or as a sliding version to run in a steel guide rail. Additional rails can be fitted to allow the leveller to serve more than one loading position.

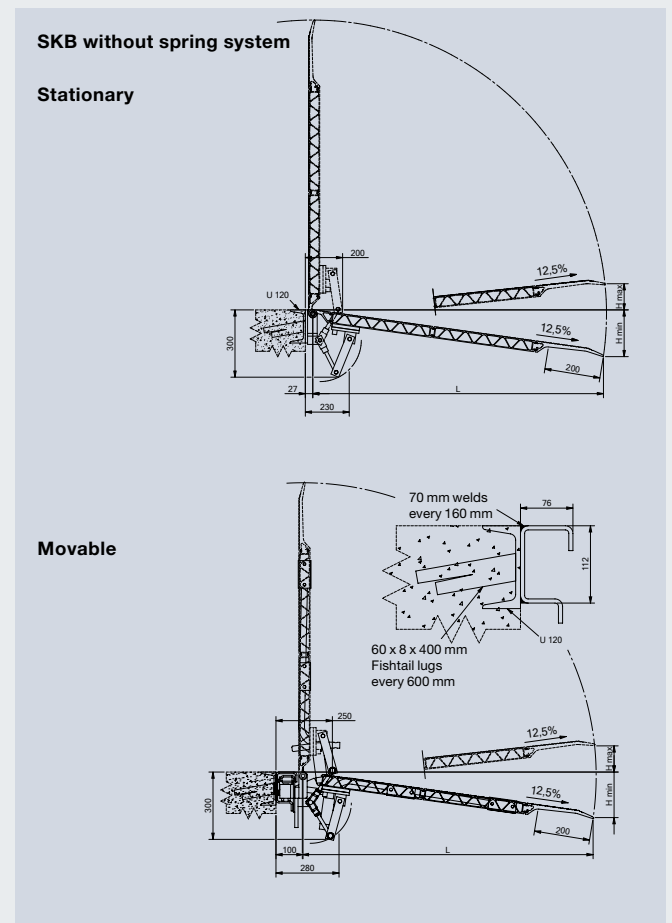
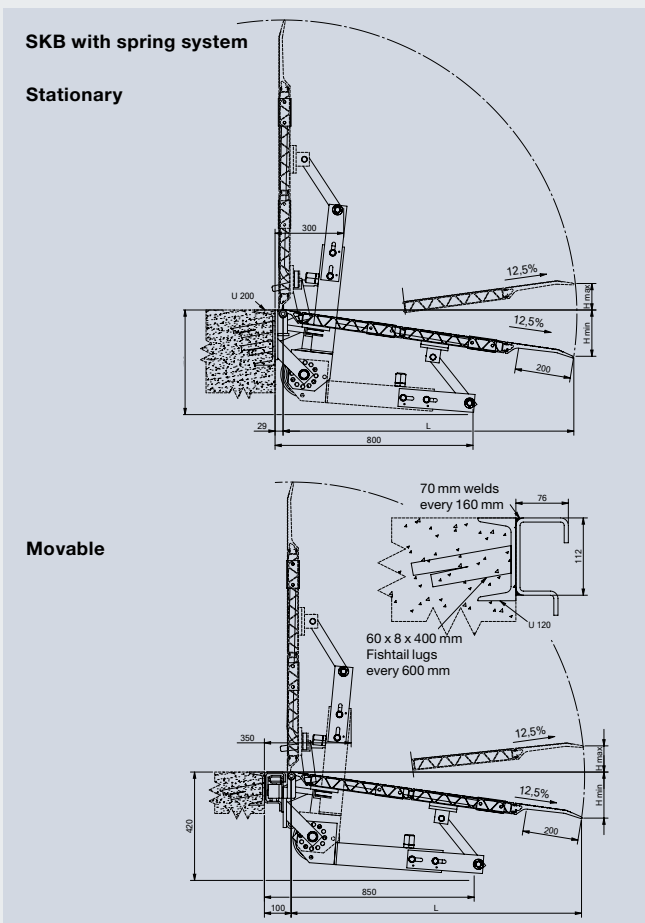
The SKB guide rail is designed with an open base which prevents the collection of dirt or debris and ensures smooth and easy sideways movement.



Safety device detail



Detail of counter balancing mechanism



Dimensions

Type	Length L (mm)	Width B (mm)	Height Difference		Capacity (kgs/pcs)	Weight (kgs/pcs)
			min. (mm)	max. (mm)		
SKB 01	815	1250	- 120	+ 80	4000	67
SKB 02*	1315	1250	- 185	+ 140	2500	102
SKB 03*	1565	1250	- 215	+ 175	1750	113
SKB 10	565	1500	- 90	+ 50	4000	67
SKB 11	815	1500	- 120	+ 80	4000	77
SKB 12*	1065	1500	- 155	+ 110	4000	103
SKB 13*	1315	1500	- 185	+ 140	4000	114
SKB 14*	1565	1500	- 215	+ 175	4000	128
Guide rail black or galvanized	1000					12 kg/m
	2000					12 kg/m
	3000					12 kg/m

Other dimensions on request

Type FBS

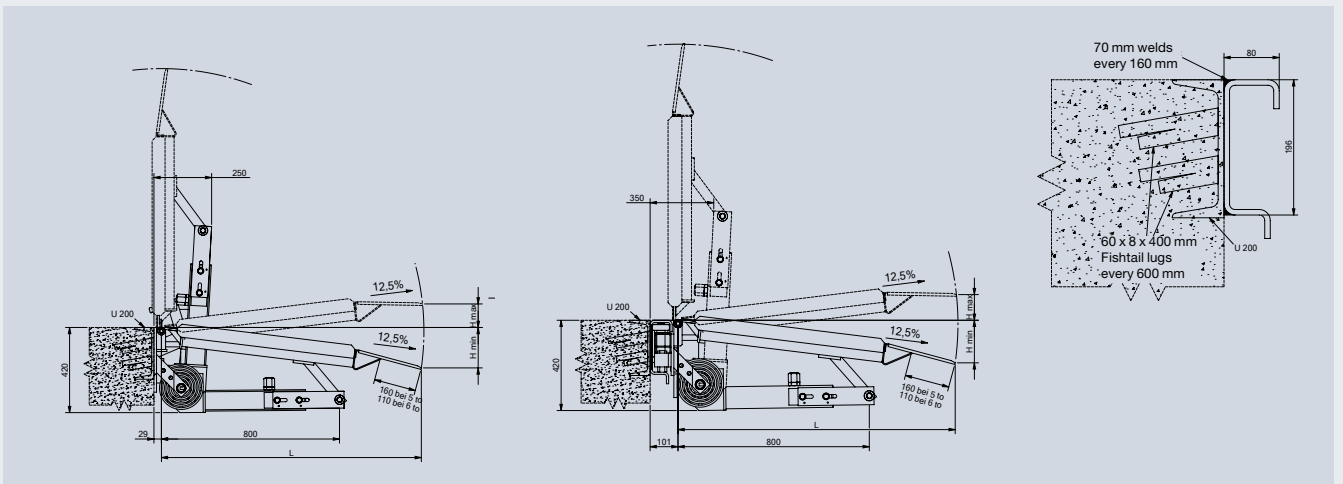
Steel loading bridge



The FBS drawbridge leveller covers most loading applications and can be used for height differences of up to 250 mm with a load capacity of 6000 kgs. The five bar tread plate surface gives a high quality antislip surface. The finish is available in either galvanized or painted. Both options protect against corrosion. The FBS levellers are available in static or sliding versions. The sliding model runs in an open base guide rail which prevents the collection of dirt and debris, ensuring smooth and easy sideways movement. Every leveller is fitted with counterbalance spring mechanism to balance the weight of the platform.



Available: in galvanized steel or in blue RAL 5010



Stationary

Movable

Dimensions

Type	Length L (mm)	Width B (mm)	Height Difference (mm)		Weight stationary (kgs/ea)	Weight movable (kgs/ea)	Weight stationary (kgs/ea)	Weight movable (kgs/ea)
			min.	max.				
					Capacity 5000 kgs		Capacity 6000 kgs	
FBSS 01 / FBSV 01	1250	1500	- 160	+ 110	230	250	245	265
FBSS 04 / FBSV 04	1500	1500	- 190	+ 140	270	290	285	305
FBSS 05 / FBSV 05	1500	1750	- 190	+ 140	300	320	315	335
FBSS 06 / FBSV 06	1500	2000	- 190	+ 140	330	350	345	365
FBSS 07 / FBSV 07	1750	1500	- 220	+ 175	290	310	305	325
FBSS 08 / FBSV 08	1750	1750	- 220	+ 175	320	340	335	355
FBSS 09 / FBSV 09	1750	2000	- 220	+ 175	350	370	365	385
FBSS 10 / FBSV 10	2000	1500	- 250	+ 205	320	340	335	355
FBSS 11 / FBSV 11	2000	1750	- 250	+ 205	360	380	375	395
FBSS 12 / FBSV 12	2000	2000	- 250	+ 205	400	420	415	435
Guide rail black or galvanized	2000				25 kg/m	25 kg/m	25 kg/m	25 kg/m
	3000				25 kg/m	25 kg/m	25 kg/m	25 kg/m

Other dimensions on request

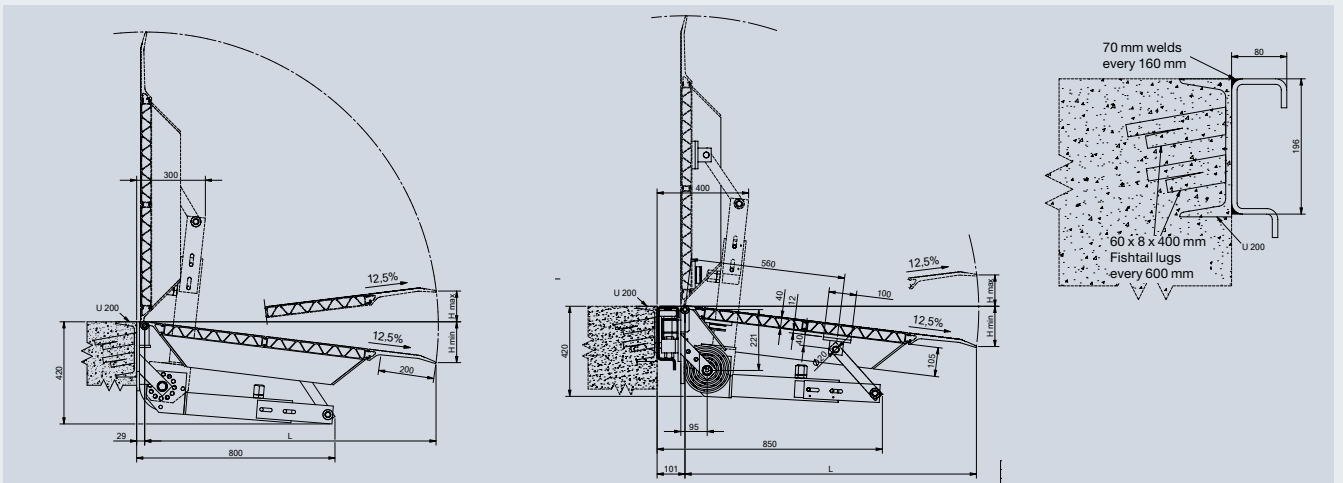
Type FBA

Aluminium loading bridge



The FBA drawbridge leveller offers a versatile light weight option which cover loads up to 4000 kgs. It is available in lengths up to 2315 mm. The FBA can be used with height differences of up to 310 mm.

It is available in static or in sliding version. The sliding model runs in an open base guide rail which prevents the collection of dirt and debris ensuring smooth, easy sideways movement. Every leveller is fitted with underside spring to balance the weight of the platform.



Stationary

Movable

Dimensions

Type	Length L (mm)	Width B (mm)	Height Difference (mm)		Capacity (kgs/ea)	Weight stationary (kgs/ea)	Weight movable (kgs/ea)
			min.	max.			
FBAS 01 / FBAV 01	1315	1500	- 185	+ 140	4500	140	158
FBAS 04 / FBAV 04	1565	1500	- 215	+ 175	4500	164	184
FBAS 05 / FBAV 05	1565	1750	- 215	+ 175	4500	188	210
FBAS 06 / FBAV 06	1565	2000	- 215	+ 175	4500	202	227
FBAS 07 / FBAV 07	1815	1500	- 250	+ 205	4500	177	207
FBAS 08 / FBAV 08	1815	1750	- 250	+ 205	4500	199	221
FBAS 09 / FBAV 09	1815	2000	- 250	+ 205	4500	218	243
FBAS 10 / FBAV 10	2065	1500	- 280	+ 235	4500	189	209
FBAS 11 / FBAV 11	2065	1750	- 280	+ 235	4500	214	236
FBAS 12 / FBAV 12	2065	2000	- 280	+ 235	4500	235	260
FBAS 13 / FBAV 13	2315	1500	- 310	+ 265	4500	201	221
FBAS 14 / FBAV 14	2315	1750	- 310	+ 265	4500	235	257
FBAS 15 / FBAV 15	2315	2000	- 310	+ 265	4500	258	283
Guide rail black or galvanized	2000					25 kg/m	25 kg/m
	3000					25 kg/m	25 kg/m

Other dimensions on request

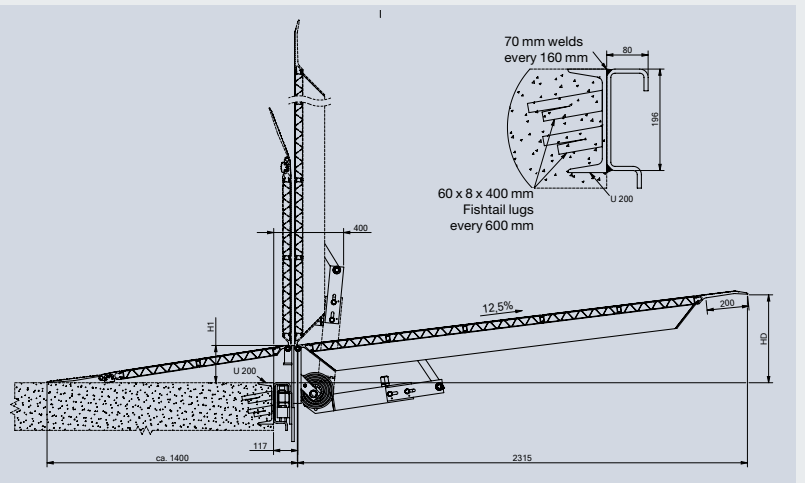
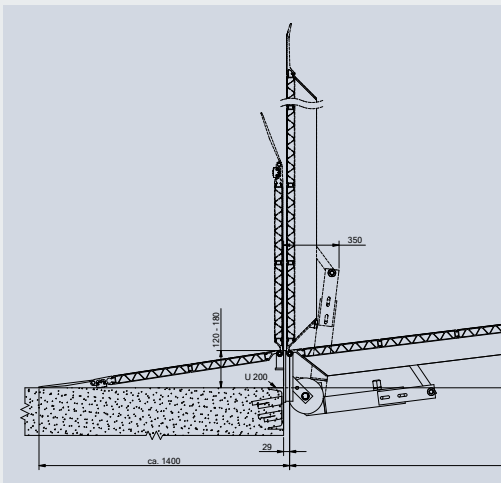
Type FBT Tandem bridge



The FBT is an aluminium two stage dock leveller. The split level platform is ideal for use on low dock heights or when using load equipment with small wheels or low clearance.

The FBT Tandem is a split drawbridge giving additional rampage for height differences of up to 460 mm which is ideal for unloading standing trailers or containers.

Using the same rail as the FBA makes a versatile addition to any loading bay.



Stationary

Movable

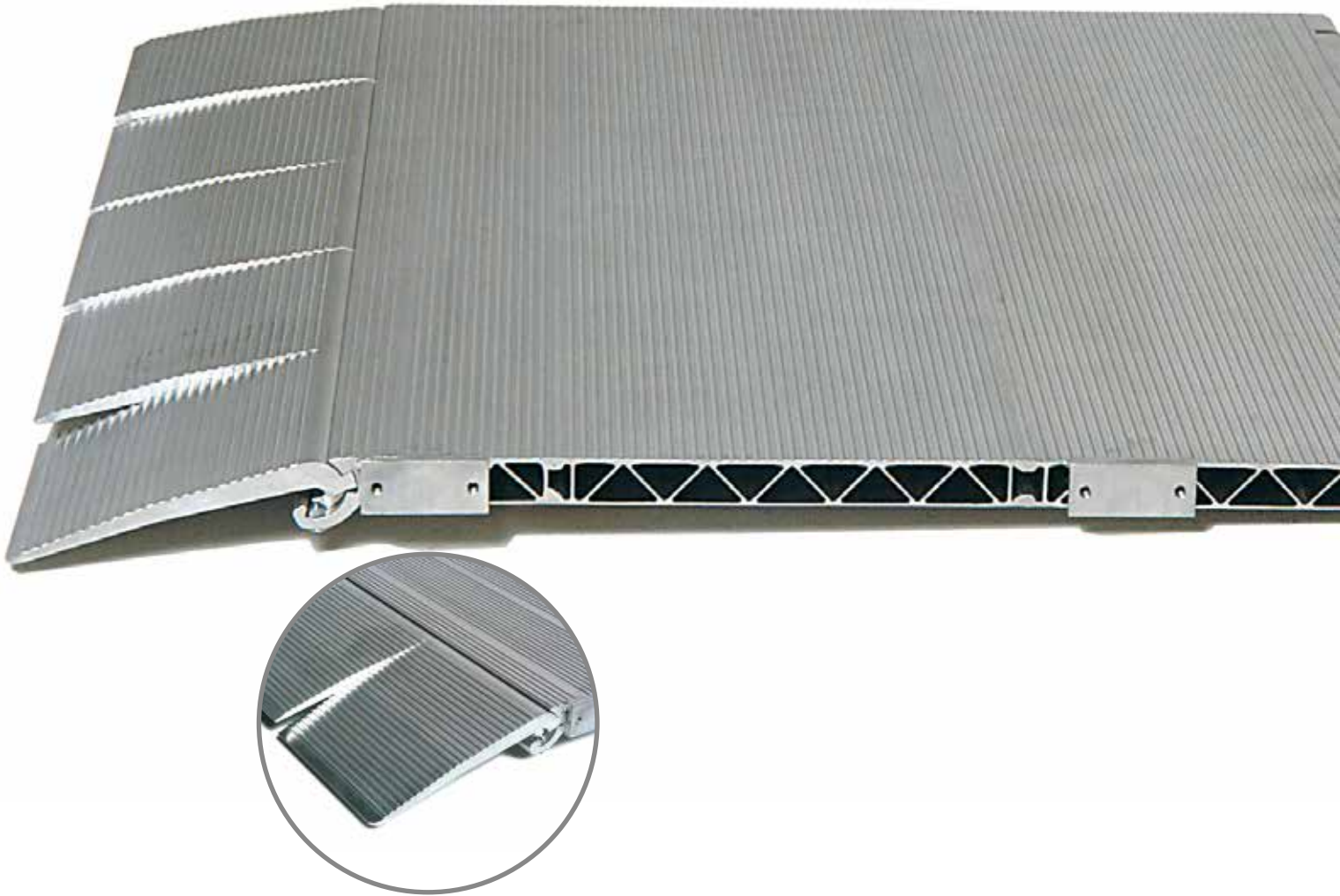
Dimensions

Type	Length L (mm)	Width B (mm)	Pivot Height H 1 (mm)	Height Difference (mm)	Capacity (kgs/ea)	Weight stationary (kgs/ea)	Weight movable (kgs/ea)
FBTS / FBTV	3700	1500	180	+ 460	4000	305	336
FBTS / FBTV	3700	1750	180	+ 460	4000	345	382
FBTS / FBTV	3700	2000	180	+ 460	4000	425	465
FBTS / FBTV	3700	1500	150	+ 430	4000	305	336
FBTS / FBTV	3700	1750	150	+ 430	4000	345	382
FBTS / FBTV	3700	2000	150	+ 430	4000	425	465
Guide rail black or galvanized	2000					25 kg/m	25 kg/m
	3000					25 kg/m	25 kg/m

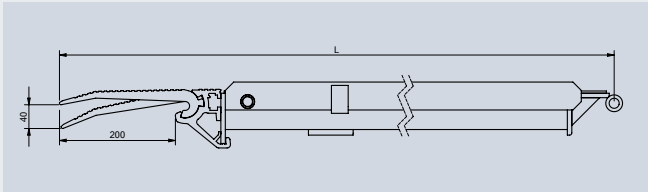
Other dimensions on request

Segmented lip

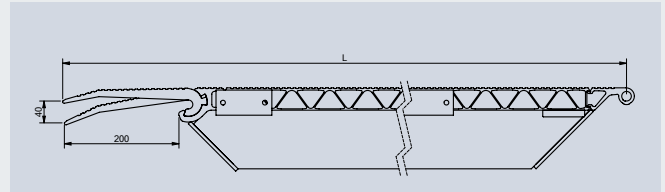
Compensate uneven areas



Aluminium segmented lips are made in accordance with BS EN 1398. During loading / unloading, particularly when using fork lifts, it is not unusual for trailers and lorry beds to tilt sideways causing gaps between bed and lip. Segmented lips are available to help close these gaps.



Steelplate with segmented lip



Aluminium plate with segmented lip

Dimensions

Model SKB, made of aluminium with segmented lip

Type	Length L (mm)	Width B (mm)	Height Difference (mm)		Capacity (kgs/ea)	Weight stationary (kgs/ea)	Weight movable (kgs/ea)
			min.	max.			
SKBS-SL / SKB-SL	855	1250	- 130	+ 80	4000	68	78
SKBS-SL / SKB-SL*	1355	1250	- 195	+ 140	2500	107	110
SKBS-SL / SKB-SL*	1605	1250	- 225	+ 170	1750	118	121
SKBS-SL / SKB-SL	605	1500	- 100	+ 50	4000	68	79
SKBS-SL / SKB-SL	855	1500	- 130	+ 80	4000	79	90
SKBS-SL / SKB-SL*	1105	1500	- 165	+ 110	4000	109	113
SKBS-SL / SKB-SL*	1355	1500	- 195	+ 140	4000	121	125
SKBS-SL / SKB-SL*	1605	1500	- 225	+ 170	4000	133	137
Guide rail black or galvanized	2000					12 kg/m	12 kg/m
	3000					12 kg/m	12 kg/m

* Model with spring system

Model FBA, made of aluminium with segmented lip

Type	Length L (mm)	Width B (mm)	Height Difference (mm)		Capacity (kgs/ea)	Weight stationary (kgs/ea)	Weight movable (kgs/ea)
			min.	max.			
FBAS-SL / FBAV-SL	1355	1500	- 195	+ 140	4500	151	163
FBAS-SL / FBAV-SL	1605	1500	- 225	+ 170	4500	175	187
FBAS-SL / FBAV-SL	1605	1750	- 225	+ 170	4500	201	215
FBAS-SL / FBAV-SL	1605	2000	- 225	+ 170	4500	216	232
FBAS-SL / FBAV-SL	1855	1500	- 225	+ 200	4500	188	200
FBAS-SL / FBAV-SL	1855	1750	- 225	+ 200	4500	212	226
FBAS-SL / FBAV-SL	1855	2000	- 225	+ 200	4500	232	248
FBAS-SL / FBAV-SL	2105	1500	- 290	+ 235	4500	200	212
FBAS-SL / FBAV-SL	2105	1750	- 290	+ 235	4500	227	241
FBAS-SL / FBAV-SL	2105	2000	- 290	+ 235	4500	249	265
FBAS-SL / FBAV-SL	2355	1500	- 320	+ 265	4500	212	224
FBAS-SL / FBAV-SL	2355	1750	- 320	+ 265	4500	248	262
FBAS-SL / FBAV-SL	2355	2000	- 320	+ 265	4500	272	288

Model FBS, made of steel, galvanized with segmented lip

Type	Length L (mm)	Width B (mm)	Height Difference (mm)		Weight stationary (kgs/ea)	Weight movable (kgs/ea)	Weight stationary (kgs/ea)	Weight movable (kgs/ea)
			min.	max.				
					Capacity 5000 kgs		Capacity 6000 kgs	
FBSS-SL / FBSV-SL	1315	1500	- 190	+ 135	230	250	245	265
FBSS-SL / FBSV-SL	1565	1500	- 220	+ 165	270	290	285	305
FBSS-SL / FBSV-SL	1565	1750	- 220	+ 165	300	320	315	335
FBSS-SL / FBSV-SL	1565	2000	- 220	+ 165	330	350	345	365
FBSS-SL / FBSV-SL	1815	1500	- 250	+ 195	290	310	305	325
FBSS-SL / FBSV-SL	1815	1750	- 250	+ 195	320	340	335	355
FBSS-SL / FBSV-SL	1815	2000	- 250	+ 195	350	370	365	385
FBSS-SL / FBSV-SL	2065	1500	- 280	+ 225	320	340	335	355
FBSS-SL / FBSV-SL	2065	1750	- 280	+ 225	360	380	375	395
FBSS-SL / FBSV-SL	2065	2000	- 280	+ 225	400	420	415	435
Guide rail black or galvanized	2000				25 kg/m	25 kg/m	25 kg/m	25 kg/m
	3000				25 kg/m	25 kg/m	25 kg/m	25 kg/m

Other dimensions on request

Fixing plates

Dock preparation material

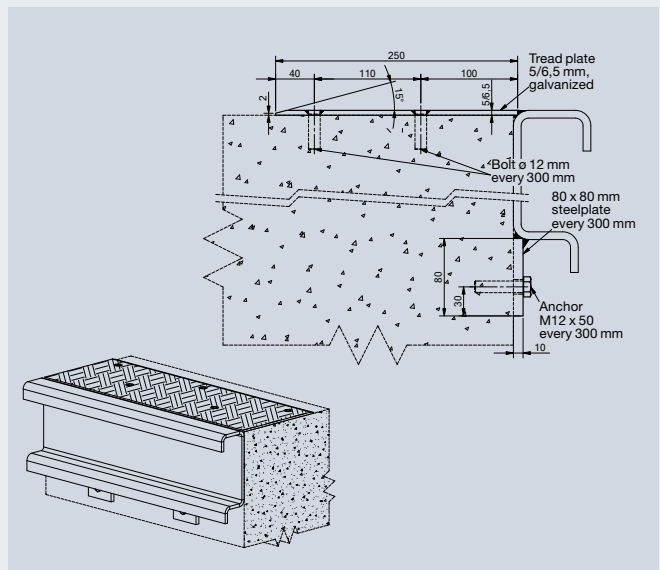
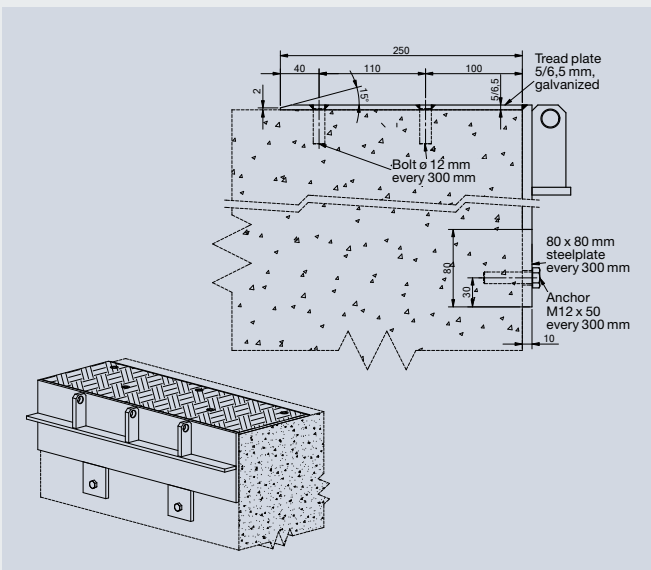
If no steelwork is available for installing guide rails our dock preparation material offers an ideal solution. A chamfered plate is bolted to the dock surface using flush fixings. Tabs are then fitted to the dock face underneath the rail. This gives welding points for the top and bottom edges of the rail.



Steel plates 80 x 80 x10 fixed underneath the guide rail or stationary dock leveller.

Galvanized steel plate fixed on top of dock with flush fixings.

Top plate welded to rail.



Stationary

Movable

Technical details

Find out more

All drawbridges are balanced individually with the use of adjustable springs.

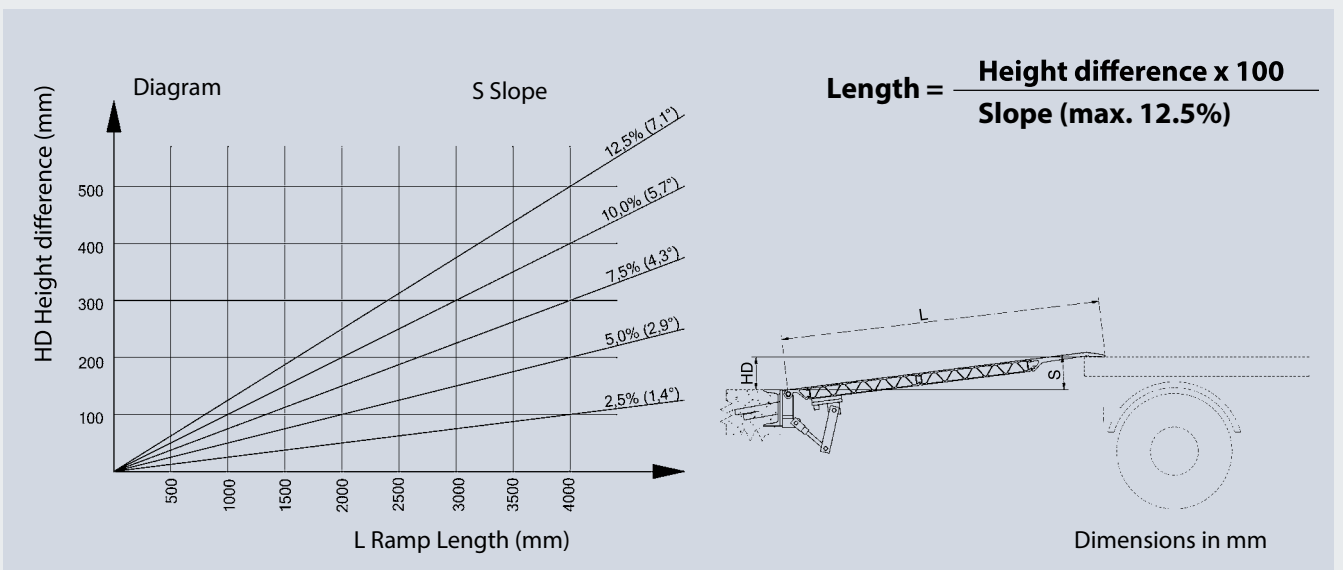
In accordance with BS EN 1398, drawbridge levellers should not be used at a gradient greater than 12.5%. Any problems with trailer tilt can be overcome with segmented lips or preferably by adjusting the trailer's position.



Safety latch locks automatically after vertical positioning.



The guide rails are designed with an open base which prevents the collection of dirt and debris, ensuring smooth and easy sideways movement.



Use this graph to calculate what length drawbridge you require. Formula for calculating platform length at a slope of 12.5% (7.1°)

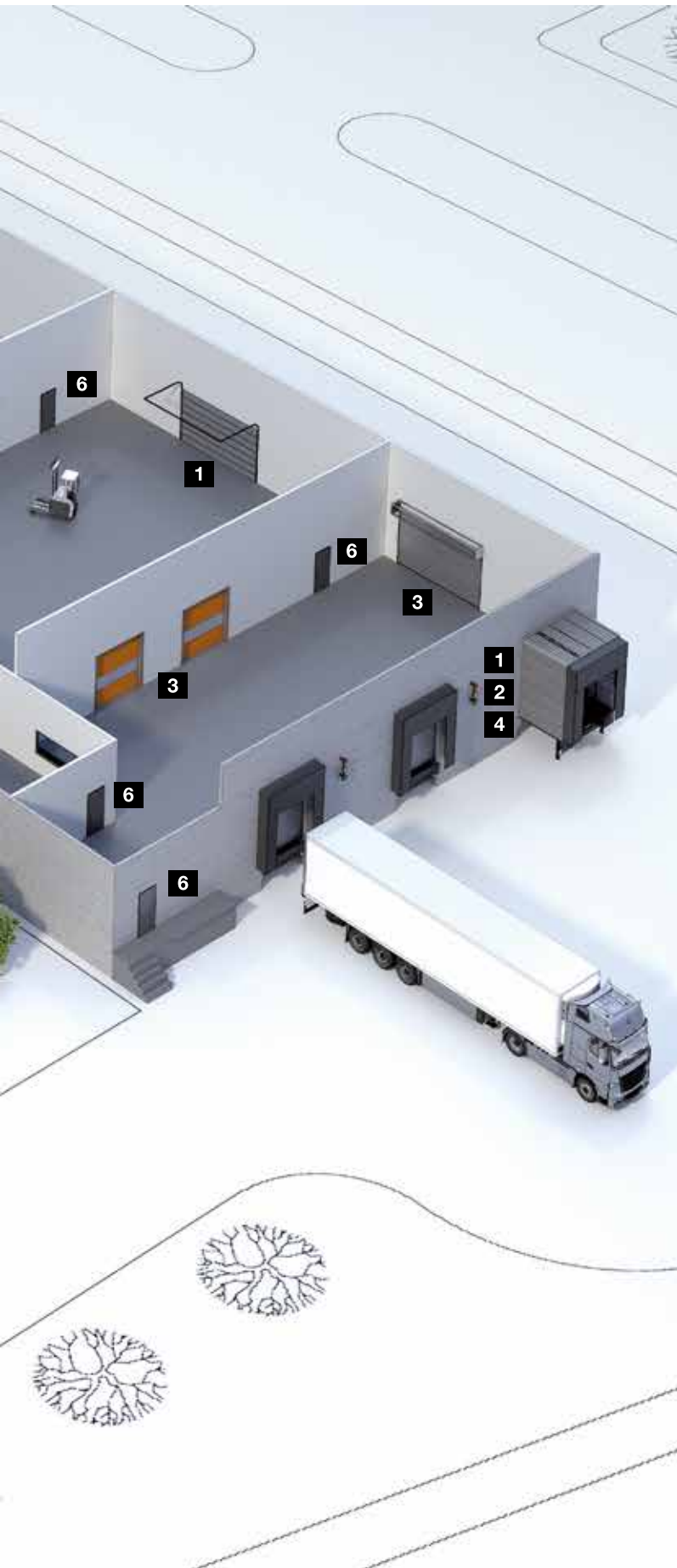
Hörmann Product Range

Everything from a single source for your construction project





Quick service with testing, maintenance and repairs
Our extensive service network means that we are always nearby and at your service around the clock.



Sectional doors



Rolling shutters and rolling grilles



High-speed doors



Loading technology



Steel and stainless steel sliding doors



Steel and aluminium multi-function doors



Steel and stainless steel doors



Steel frames with high-quality timber function doors from Schörghuber



Fully glazed tubular frame parts



Automatic sliding doors



Visibility window



Collective garage doors

Hörmann: Quality without Compromise



Hörmann KG Amshausen, Germany



Hörmann KG Antriebstechnik, Germany



Hörmann KG Brandis, Germany



Hörmann KG Brockhagen, Germany



Hörmann KG Dissen, Germany



Hörmann KG Eckelhausen, Germany



Hörmann KG Freisen, Germany



Hörmann KG Ichttershausen, Germany



Hörmann KG Werne, Germany



Hörmann Alkmaar B.V., Netherlands



Hörmann Legnica Sp. z o.o., Poland



Hörmann Beijing, China



Hörmann Tianjin, China



Hörmann LLC, Montgomery IL, USA



Hörmann Flexon LLC, Burgettstown PA, USA



Shakti Hörmann Ltd., India

Hörmann is the only manufacturer worldwide that offers you a complete range of all major building products from one source. We manufacture in highly-specialised factories using the latest production technologies. The close-meshed network of sales and service companies throughout Europe, and activities in the USA and Asia, make Hörmann your strong partner for first-class building products, offering “Quality without Compromise”.

GARAGE DOORS
OPERATORS
INDUSTRIAL DOORS
LOADING EQUIPMENT
HINGED DOORS
DOOR FRAMES

Hörmann Middle East and Africa FZE
Doors for Home and Industry

Phone +971 4 805 3600
Fax +971 4 880 7699
E-Mail info.dxb@hormann.com
Website www.hormann.ae

Street N406, Plot MO 0203, P. O. Box 262784
Dubai, Jebel Ali Free Zone North
United Arab Emirates

